

Schluter® Curbless Showers

More ways to create your open-concept oasis





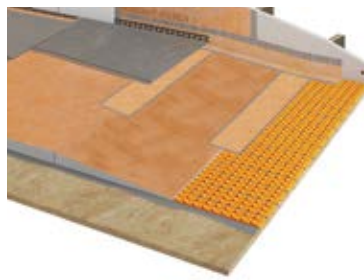
Open-concept bathrooms are coveted for their sleek design and consummate functionality. While ideal for all life stages of a growing family, curbless showers are exceptionally optimal for those who wish to age in place. The lack of threshold or curb opens up the shower area to the rest of the bathroom, making the whole room easier to clean and maintain. Flexibility in design is enhanced through the use of tile: choose simple, large-format tile for a clean and streamlined look, or craft a creative combination of field and accent tile on the floor or wall without the obstruction of a shower curb.

Curbless showers allow you to create a spa-like retreat, with built-in seats and benches, inset shelves and niches, low-profile linear drains, heated floors, and even steam showers. And now, they are even easier to achieve.

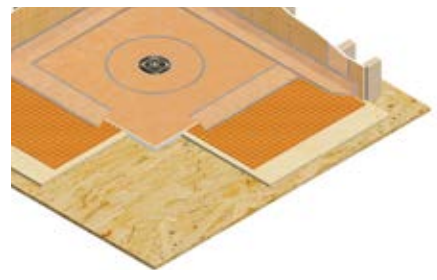
Here are 3 ways you can curb the curb:



Recess the Shower Floor



Prefabricated Shower Tray and Ramp



Raise the Bathroom Floor

Recess the Shower Floor

Schluter®-KERDI-DRAIN

A recessed shower floor allows for the installation of a sloped mortar bed or a prefabricated shower tray that is flush with the rest of the bathroom floor. Designed specifically for curbless showers, the KERDI-SHOWER-TT thin shower tray features a low perimeter height and can be installed over a recessed subfloor to create an even transition from the bathroom floor tile right into the shower. Available in six different sizes, KERDI-SHOWER-TT shower trays are waterproof and ready for tile, allowing for a quick and easy installation.

Schluter®-KERDI-LINE & KERDI-LINE-VARIO

With the KERDI-LINE linear drain, the floor is sloped on a single plane which allows the use of large-format tile. The KERDI-SHOWER-LT/-LTS sloped shower trays feature integrated waterproofing and are designed to integrate with KERDI-LINE drains. Various sizes are available to accommodate both center drain and perimeter drain placement. With the KERDI-LINE and KERDI-LINE-VARIO linear drains, the floor is sloped on a single plane which allows the use of large-format tile. The KERDI-SHOWER-LT/-LTS sloped shower trays feature integrated waterproofing and are designed to integrate with both of these drains. Various sizes are available to accommodate both center drain and perimeter drain placement. Shower entry placement is not recommended for KERDI-LINE-VARIO.

Recessing the floor of a shower must be done in a way that preserves the structural integrity and safety of the construction. This may require the services of a qualified design professional (e.g., architect, engineer, etc.).

K-SHCR

Solid backing with **KERDI** or **KERDI-BOARD**

KERDI-BAND waterproofing strip

KERDI-SHOWER-TT tray

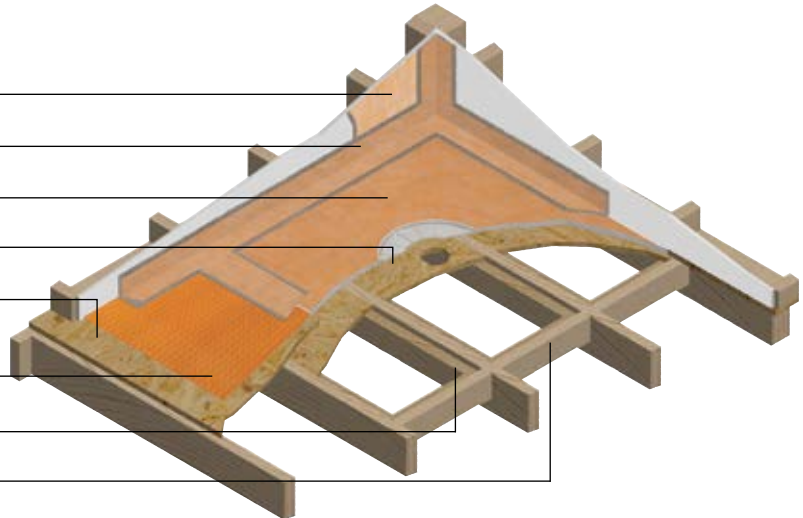
Recessed wood subfloor panel

Existing wood subfloor

DITRA, **DITRA-XL**, **DITRA-HEAT/-PS**, or **DITRA-HEAT-DUO/-PS** uncoupling membrane¹

Recessed ledgers

Blocking



K-SHBF

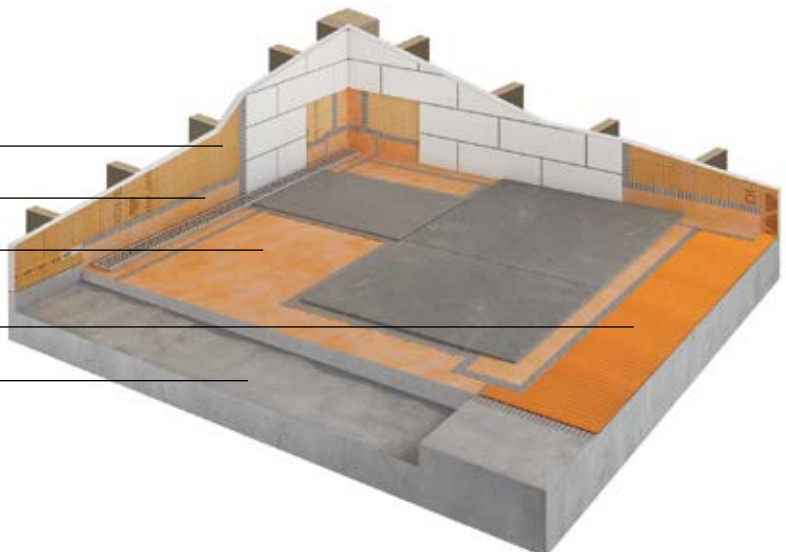
Solid backing with **KERDI** or **KERDI-BOARD**

KERDI-BAND waterproofing strip

KERDI-SHOWER-LT/-LTS tray

DITRA, **DITRA-XL**, **DITRA-HEAT/-PS**, or **DITRA-HEAT-DUO/-PS** uncoupling membrane¹

Concrete subfloor



¹To achieve a flush assembly, attention must be paid to the combination of the varying heights of all installation materials (substrate, **DITRA** or other Schluter®-Systems uncoupling membrane, and tile).



Prefabricated Shower Tray and Ramp

When recessing the floor is not an option, a prefabricated shower tray and ramp, like the KERDI-SHOWER-T/-TS/-TT shower trays and KERDI-SHOWER-R shower ramp, facilitate the transition between the shower and bathroom floors. The KERDI-SHOWER-T/-TS/-TT trays are available in a variety of sizes and feature integrated waterproofing. The KERDI-SHOWER-T features an outlet for center drain placement, while the KERDI-SHOWER-TS is designed for off-center drain placements. KERDI-SHOWER-TT features a thin perimeter height for minimal transition height. Ideal for use in curbless showers, the KERDI-SHOWER-R ramp is made of lightweight, expanded polystyrene with integrated waterproofing and adheres to the slope ratio required by the ADA.

K-SHBF

Schluter®-KERDI-DRAIN

Solid backing with **KERDI** or **KERDI-BOARD**

KERDI-BAND waterproofing strip

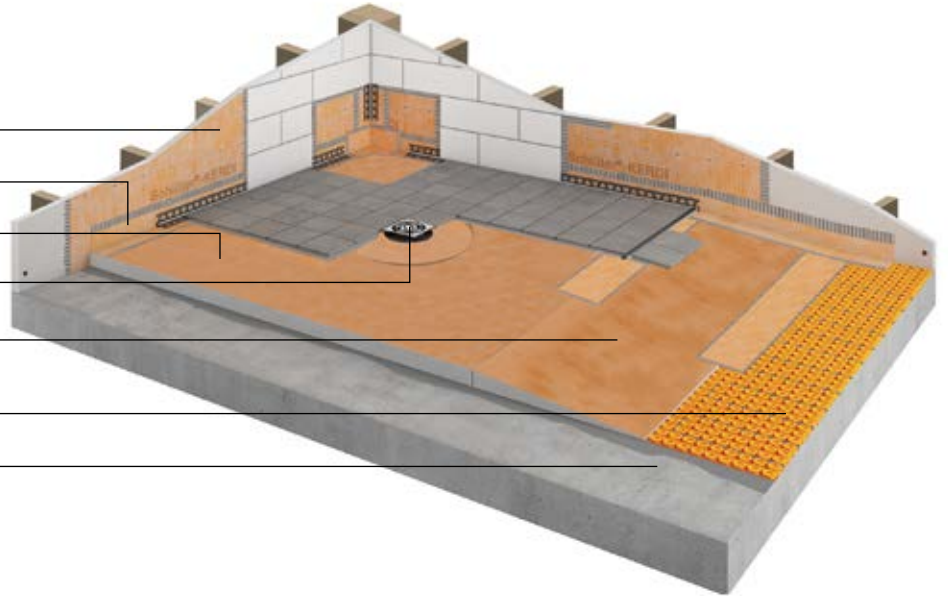
KERDI-SHOWER-T/-TS/-TT tray

KERDI-DRAIN

KERDI-SHOWER-R ramp

DITRA, DITRA-XL, DITRA-HEAT/-PS, or DITRA-HEAT-DUO/-PS uncoupling membrane¹

Wood or concrete subfloor



Schluter®-KERDI-LINE/-VARIO

Solid backing with **KERDI** or **KERDI-BOARD**

KERDI-BAND waterproofing strip

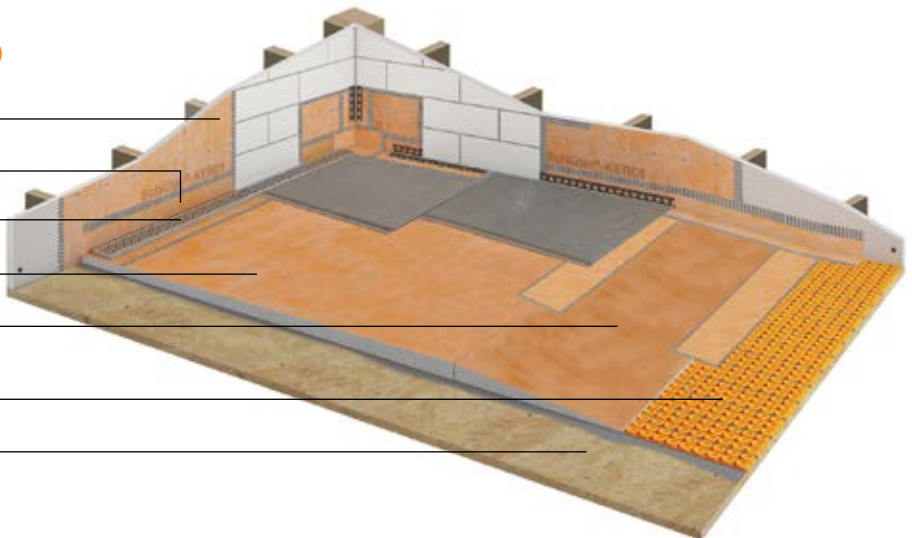
KERDI-LINE or **KERDI-LINE-VARIO**¹

KERDI-SHOWER-LT/-LTS tray

KERDI-SHOWER-R ramp

DITRA, DITRA-XL, DITRA-HEAT/-PS, or DITRA-HEAT-DUO/-PS uncoupling membrane²

Wood or concrete subfloor



¹KERDI-LINE-VARIO is not recommended for placement at the shower entrance.

²To achieve a flush assembly, attention must be paid to the combination of the varying heights of all installation materials (substrate, **DITRA** or other Schluter®-Systems uncoupling membrane, and tile).



Raise the Bathroom Floor

If you cannot or do not wish to recess the floor (e.g. post-tension concrete) or use a ramp, the use of additional materials to raise the bathroom floor is another option. With the KERDI-SHOWER-TT thin shower tray on a wood subfloor, you can build up the rest of the bathroom floor by installing either a 5/8" or 3/4" plywood/OSB panel on top of the wood subfloor along with DITRA or other Schluter®-Systems uncoupling membrane. Over a concrete subfloor, use a mortar bed of appropriate thickness along with DITRA or other Schluter®-Systems uncoupling membrane to build up the rest of the bathroom floor.

K-SHBF

Schluter®-KERDI-DRAIN

Solid backing with **KERDI** or **KERDI-BOARD**

KERDI-KERECK-F

KERDI-BAND waterproofing strip

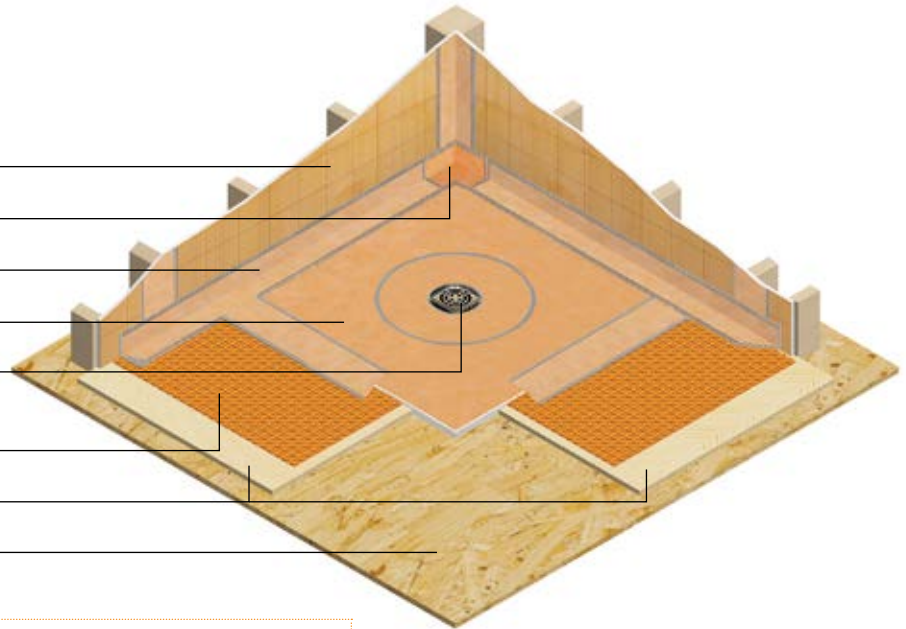
KERDI-SHOWER-TT tray

KERDI-DRAIN

DITRA, DITRA-XL, DITRA-HEAT/-PS, or DITRA-HEAT-DUO/-PS uncoupling membrane¹

5/8" or 3/4" plywood/OSB

Wood subfloor



If working with a concrete subfloor, use a bonded mortar bed of appropriate thickness to build up the rest of the bathroom floor.

Schluter®-KERDI-LINE/-VARIO

Solid backing with **KERDI** or **KERDI-BOARD**

KERDI-KERECK-F

KERDI-BAND waterproofing strip

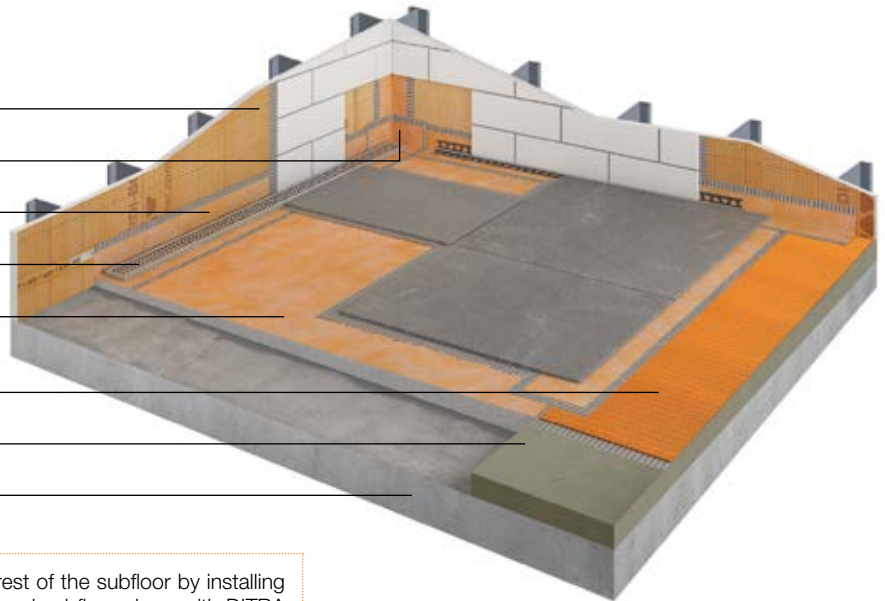
KERDI-LINE or **KERDI-LINE-VARIO**¹

KERDI-SHOWER-LT/-LTS tray

DITRA, DITRA-XL, DITRA-HEAT/-PS, or DITRA-HEAT-DUO/-PS uncoupling membrane²

Mortar bed

Concrete subfloor



If working with a wood subfloor, you can build up the rest of the subfloor by installing either a 5/8" or 3/4" plywood/OSB panel on top of the wood subfloor along with DITRA or other Schluter®-Systems uncoupling membrane. Follow the Wood Underlayment installation guidelines as found in the Schluter®-DITRA or Schluter®-DITRA-HEAT Installation Handbooks for fastening guidelines.

¹KERDI-LINE-VARIO is not recommended for placement at the shower entrance.

²To achieve a flush assembly, attention must be paid to the combination of the varying heights of all installation materials (substrate, **DITRA** or other Schluter®-Systems uncoupling membrane, and tile).



Thin Shower Trays

Ideal for curbless showers!

KERDI-SHOWER-TT shower tray options help to simplify curbless shower designs. These trays feature perimeter heights of 7/8" to 1-1/32".



32" x 38" x 29/32"
(81 x 97 x 2.3 cm)



36" x 36" x 7/8"
(91 x 91 x 2.2 cm)



36" x 48" x 1"
(91 x 122 x 2.5 cm)



38" x 38" x 29/32"
(97 x 97 x 2.3 cm)



48" x 48" x 1"
(122 x 122 x 2.5 cm)



38" x 38" x 1-1/32"
(97 x 97 x 2.6 cm)

Waterproofing

Waterproofing measures are essential in any bathroom, but especially important in a curbless environment. Schluter®-Systems offers a complete line of products with options that integrate together to form a fully bonded, watertight assembly for tiled curbless showers and throughout the bathroom.



KERDI-BOARD

KERDI-BOARD is an extruded polystyrene foam panel that is installed directly on stud framing, and replaces gypsum or cement board to create shower walls.

KERDI

KERDI is a sheet-applied polyethylene waterproofing membrane and vapor retarder that is applied to the solid backing on the walls and the shower base.

Prefabricated Substrates



Niches



Benches

KERDI-BOARD-SN/-SB

Prefabricated niches and benches eliminate all the prep work for quick and easy installations.



KERDI-BOARD-SNLT

Prefabricated niche with integrated LIPROTEC LED lighting that is watertight and code-compliant.

Floors

Because wet areas and dry areas are not clearly defined in curbless showers, the bathroom must be sufficiently protected against water and moisture as whole.

DITRA, DITRA-XL, DITRA-HEAT/-PS, and DITRA-HEAT-DUO/-PS are waterproof uncoupling membranes that prevent the main cause of cracked tile and grout by absorbing movement stresses from the substrate and ensuring the integrity of tiled surfaces. DITRA-HEAT and DITRA-HEAT-DUO incorporate electric floor warming to create comfortable tiled floors. Secondary drainage may be required in the drying area for any overflow.

DITRA-HEAT-PS and DITRA-HEAT-DUO-PS are peel and stick membranes that feature a pressure-sensitive adhesive (PSA) to bond the membrane to the substrate, replacing the need for thin-set mortar. The -PS versions offer the same core functions of DITRA-HEAT and DITRA-HEAT-DUO.

DITRA-HEAT-PS and DITRA-HEAT-DUO-PS membranes are waterproof when joints are properly sealed with KERDI-BAND. Peel and stick membranes are suitable for use in a bathroom/wet room if meeting specifications ANSI A118.10 is not required.



DITRA



DITRA-XL



DITRA-HEAT



DITRA-HEAT-PS

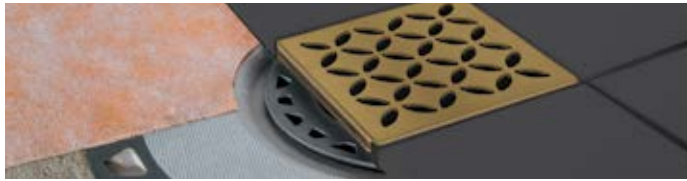


DITRA-HEAT-DUO



DITRA-HEAT-DUO-PS

Drains



KERDI-DRAIN

KERDI-DRAIN is a floor drain with an integrated bonding flange that provides a large contact area for a secure connection to the KERDI waterproofing membrane at the top of the assembly.

STYLE Brushed Stainless Steel



Stainless Steel	Nickel	Rose Gold	Classic Gold
Vintage Gold	Matte White	Ivory	Greige
Cream	Bronze	Stone Grey	Pewter
Dark anthracite	Matte Black		

CLASSIC Stainless Steel



Stainless Steel	Chrome
Oil-rubbed Bronze	Nickel
Rose Gold	Classic Gold
Vintage Gold	

CONTOUR Anodized Aluminum



Brushed Nickel
Brushed Copper
Brushed Brass

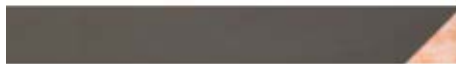
TILE Tileable Covering Support



KERDI-LINE

KERDI-LINE is a low profile linear floor drain specifically designed for bonded waterproofing assemblies. The channel body features an integrated collar made of KERDI to ensure a simple and secure, watertight connection around the drain.

TILE



SOLID



SQUARE



STYLE Brushed Stainless Steel

PURE



CURVE



FLORAL



KERDI-LINE-VARIO

KERDI-LINE-VARIO is a low profile linear floor drain that can be cut to custom lengths on-site. The two-piece system consists of an ultra-slim channel body and grate kit, and a flange kit.

HERRINGBONE



SLANT



FLORAL



SQUARE



